

The Complete Advanced Pilot 6th Edition Update

By Bob Gardner

The following changes provide updates to information printed in the 6th Edition of *The Complete Advanced Pilot* by Bob Gardner. Additional information and updates will continue to be provided on the ASA Reader Resource webpage: www.asa2fly.com/reader/cap.

Each entry below signals a change or addition to the text, listed as follows: Page number, location on page/instructions, new text or change.



Errata for Chapter 10 of *The Complete Advanced Pilot*

A error at printing occurred on Page 10-24 for Figure 10-18. The VOR RWY 27 for Oshkosh (OSH) was accidentally substituted for the correct Wheeler, Texas plate. The figure caption, “Figure 10-18. Wheeler, Texas” is correct; the printed OSH plate is incorrect. (See next page of this Update for a full-sized version of Figure 10-24.)

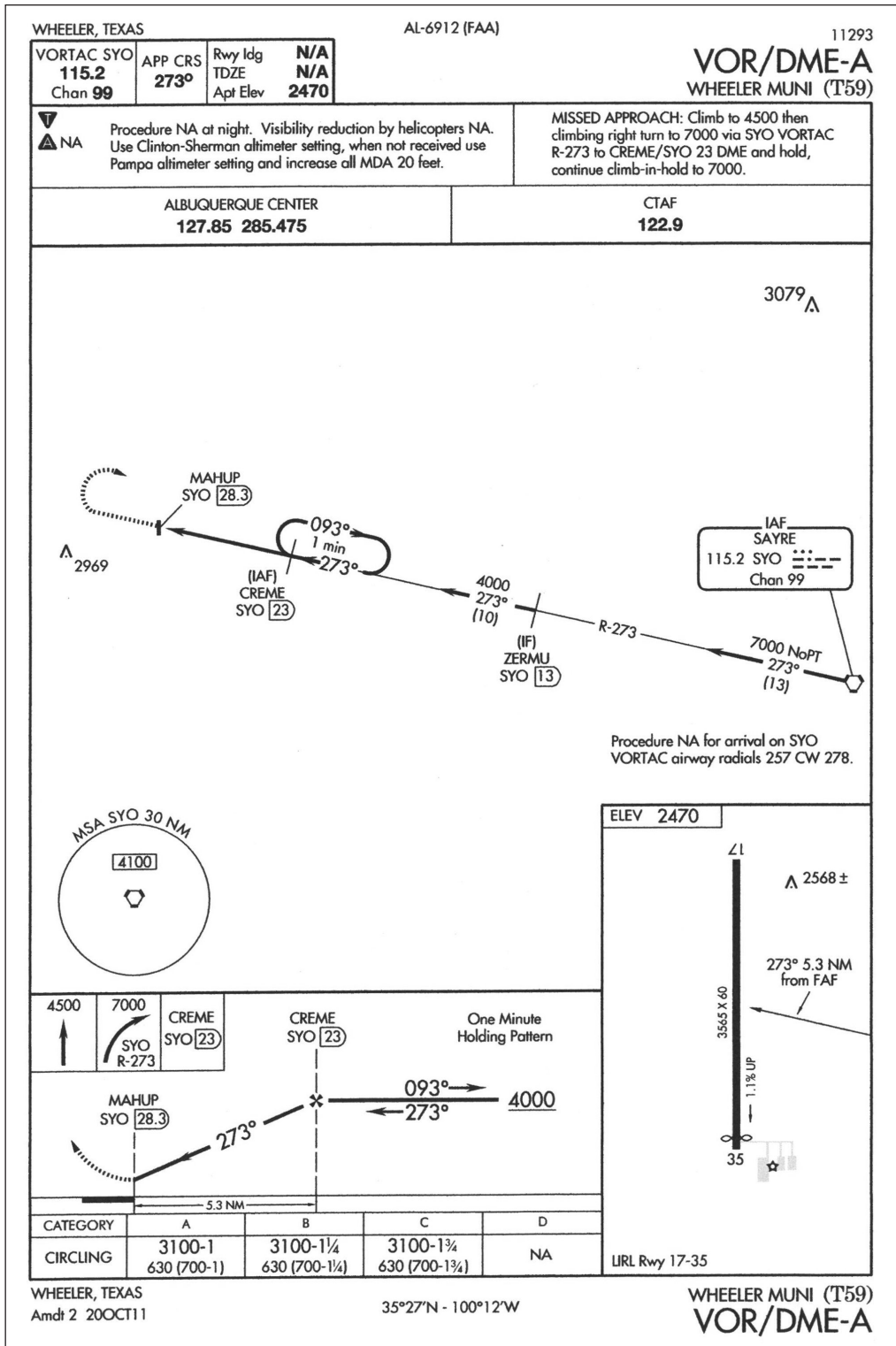


Figure 10-18. Wheeler, Texas